

Apartment 4 21 Chesham Place Belgravia SW1



Section view of apartment 4

Since its complete in 2008, 21 Chesham Place has won a reputation as the most sort after residential address in Belgravia.

Located within a conservation area, with architecture by Foster + Partners and bespoke interior design by Candy & Candy, 21 Chesham Place is the first, and possibly the last, boutique development of its kind in Belgravia.

As well as underground parking and a 24 hour concierge service, this apartment benefits from a beautiful double-height reception room, as well as boasting two extensive external terraces.

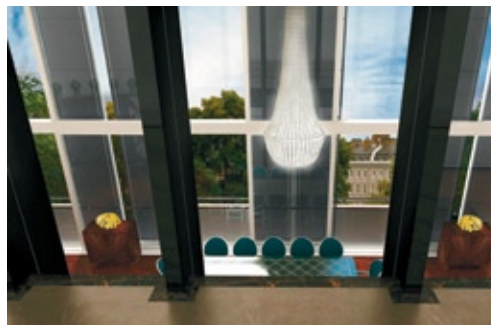
www.21cheshamplace.com



Front view of 21 Chesham Place



Formal front reception room (artist's impression)



Formal front reception room (artist's impression)



Formal front reception room



Rear view of 21 Chesham Place (artist's impression)

21 Chesham Place

Status

Viewing strictly by appointment

Tenure

Share of freehold

Amenities

Private underground car park. 24 hour concierge service. Interior design and finish by Candy & Candy

Apartment 4 Duplex apartment with two parking spaces

Accommodation

Entrance hall, substantial dining/media room, reception room, kitchen/breakfast room, master bedroom with en suite bathroom and dressing room, four guest bedrooms with en suite bath or shower rooms, two staff bedrooms, staff kitchenette, balcony/terrace to certain bedrooms and kitchen.

Gross total area

8,368 sq.ft/777.4 sq.m

Gross internal area

7,916 sq.ft/735.4 sq.m

Gross external area

452 sq.ft/42 sq.m

Price on application

